



EXPERTS IN UNDERWATER HULL CLEANING AND PROPELLER POLISHING
www.jvsfujairahhullcleaning.com

 +971 9 2248801, +971 553870596

 info@jvsfujairahhullcleaning.com



INTRODUCTION

JVS DIVING AND MARINE SERVICES

DRIVING MARITIME EXCELLENCE THROUGH INNOVATION,
EXPERTISE, AND UNWAVERING COMMITMENT

- **Established in 2014, JVS DIVING & MARINE SERVICES** has become one of the most trusted and well respected marine services organizations in Fujairah and across United Arab Emirates. With longstanding client relationships spanning multiple sectors and geographies, we have built our expertise on a simple formula of high quality work, an expert in-house team and a commitment to the highest levels of safety and customer service possible. We have fully equipped Commercial Diving and Marine Services Company dedicated to providing high quality underwater and above water services for the principals who call their ships in UAE Ports, Anchorage.
- Our diving and marine services are to fulfill your requirements for underwater hull cleaning, propeller polishing or damage repairs, when your response time is critical, in an emergency, your schedule and when your reputation are on the line.
- You should know that when ships begin to lose speed and fuel efficiency, the loss of profits is never far behind. This is an obvious reason why scheduling your vessels for preventive maintenance makes good economic sense.
- Fujairah, United Arab Emirates is a crucial shipping hub, where over 100 ships calling average a day for various ship services and cargo operations. Fujairah is the 2nd busiest Anchorage bunkering station in the world.
- Fujairah, United Arab Emirates is known, along with Singapore and Rotterdam as one of the top Bunkering locations in the World.

Our Mission & Vision

- **Mission:** Deliver high-quality underwater and above-water solutions with safety, reliability, and efficiency.
- **Vision:** Be a leader in innovative marine services across the UAE.



SERVICES

Our Service Includes :-

- Underwater hull cleaning.
- Underwater propeller cleaning & polishing.
- Underwater hull and niche areas cleaning- Australian standards.
- Underwater hull and niche areas cleaning- New Zealand MPI standards.
- Underwater sea chest grids and fire pump grid internal & external cleaning.
- Underwater MPGS nozzle cleaning.
- Underwater bow thruster tunnel cleaning and blades polishing
- Underwater IWS CCTV inspection with class and without class attendance.
- Underwater hull paint survey as per paint manufacturer requirement.
- Underwater propeller shaft reading using poker gauge.
- Underwater rudder pintle clearance measurement using feeler gauge.
- Underwater still photo inspection. Underwater normal video inspection.
- Underwater cofferdam installation for on board repair.
- Underwater epoxy putty covering for anodes.
- Underwater bow thruster grid & sea chest grid fixing.
- Underwater plugging and unplugging of overboard pipe.
- Underwater blanking of sea chest grids, speed log for on board repair.
- Underwater blanking of echo sounder for on board repair.
- Underwater fishing net, rope removal from rope guard and propeller shaft.
- Underwater rope guard blanking for repair.
- Underwater doubler plate fixing with epoxy putty.
- Underwater overboard pipe internal inspection using bore scope camera.
- Underwater diving support for anchor handling operations.
- Above water level, boot top area cleaning using high pressure water jet machine.



APPROVALS

ISO CERTIFICATES



ISO 9001:2015, ISO 14001:2015
& ISO 45001:2018

DIVING ASSOCIATION MEMBERSHIP CERTIFICATES



ADCI



IDSA

IACS CERTIFICATES



Lloyd's
Register

JVS DIVING AND MARINE SERVICES IS
APPROVED BY LR CLASS



JVS DIVING AND MARINE SERVICES IS
APPROVED BY DNV CLASS



JVS DIVING AND MARINE SERVICES IS
APPROVED BY ABS CLASS



JVS DIVING AND MARINE SERVICES IS
APPROVED BY NKK CLASS



JVS DIVING AND MARINE SERVICES IS
APPROVED BY BV CLASS



IRCLASS
Indian Register of Shipping

JVS DIVING AND MARINE SERVICES IS
APPROVED BY IRS CLASS



JVS DIVING AND MARINE SERVICES IS
APPROVED BY RINA CLASS



JVS DIVING AND MARINE SERVICES IS
APPROVED BY KR CLASS

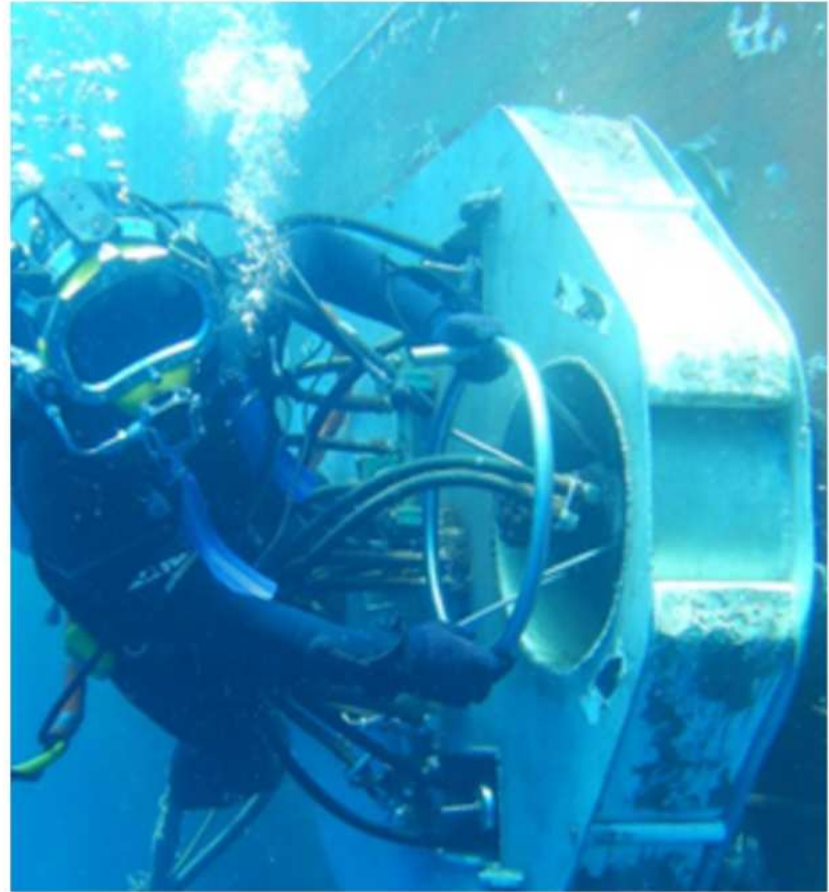


HULL CLEANING AND PROPELLER POLISHING SERVICES

Underwater Hull Cleaning

Marine vessels face constant exposure to marine growth like algae, barnacles, and biofilms that accumulate on their hulls over time. This accumulation not only increases drag but also results in reduced speed, higher fuel consumption, and greater wear and tear on the vessel's propulsion system. At JVS Diving and Marine Services, we specialize in providing professional underwater hull cleaning services designed to restore your ship's efficiency and maintain its optimal performance.

Using advanced cleaning techniques and cutting-edge equipment, our expert divers meticulously remove all forms of marine growth while preserving the integrity of the vessel's anti-fouling coatings.



Underwater Propeller Polishing

A vessel's propeller plays a crucial role in its propulsion system, and its performance directly impacts the ship's speed, fuel efficiency, and operational costs. Over time, propellers are subjected to harsh underwater conditions, leading to the buildup of marine growth, corrosion, and surface roughness. These factors significantly hinder propulsion efficiency, resulting in increased fuel consumption and decreased vessel performance.

At JVS Diving and Marine Services, we provide expert underwater propeller polishing services to restore and enhance the performance of your ship's propeller.

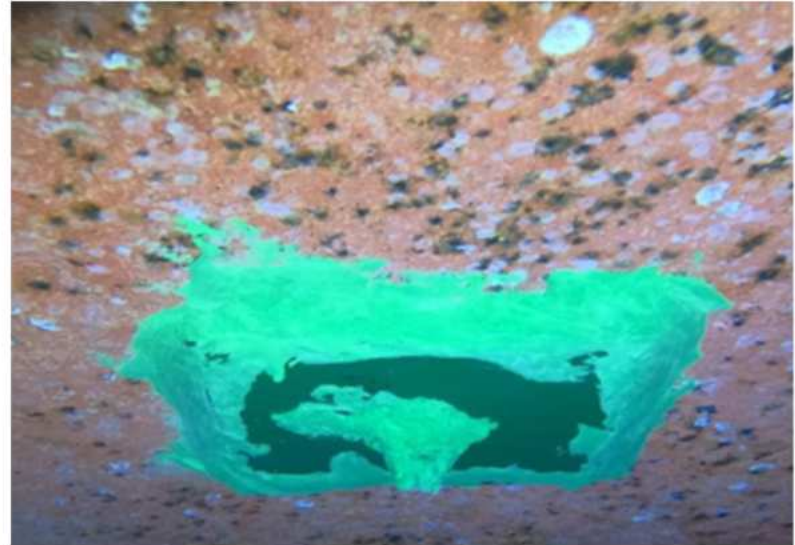




HULL, THRUSTER AND GRIDS MAINTENANCE SERVICES

Underwater Doubler Plate Fixing with Epoxy Putty

Doubler plates are used to reinforce damaged or weakened areas of a vessel's hull. JVS provides underwater doubler plate fixing services using high-quality epoxy putty to create a strong and durable bond. This service is essential for maintaining the structural integrity of your vessel and preventing further damage.



Underwater Bow Thruster Tunnel Cleaning and Blades Polishing

Bow thrusters are an indispensable component of modern vessels, providing the maneuverability needed to navigate tight spaces, such as ports, harbors, and canals. However, the tunnels and blades of bow thrusters are prone to the accumulation of marine growth, which can impair their performance and reduce efficiency. JVS Diving and Marine Services offers comprehensive cleaning and polishing services for bow thruster tunnels and blades.



Underwater Bow Thruster Grid/Sea Chest Grid Fixing

Bow thruster and sea chest grids play a vital role in protecting a vessel's internal systems by preventing the ingress of debris, which could cause significant damage and reduce operational efficiency. Over time, these grids may become loose, misaligned, or damaged due to marine growth, harsh underwater conditions, or operational wear and tear. Prompt repair and realignment of these grids are essential to avoid performance issues and costly breakdowns.

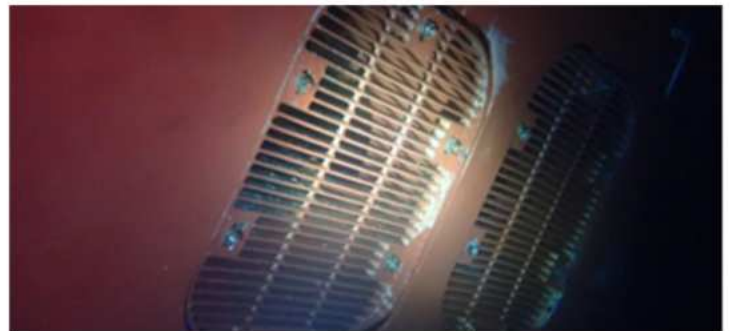
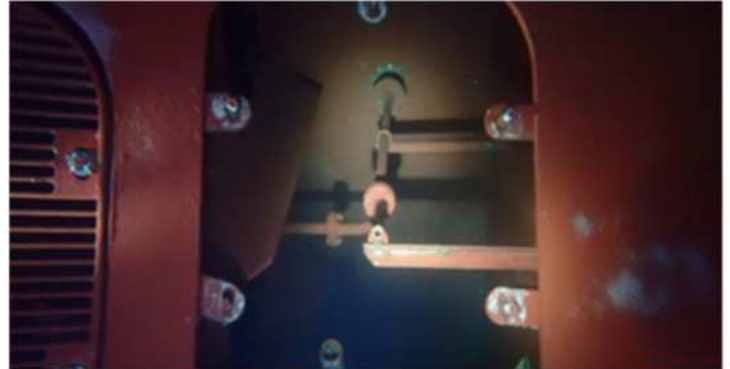




SEA CHEST AND OVERBOARD PIPES REPAIR SERVICES

Underwater Sea Chest Grids Internal and External Cleaning

Sea chest grids are a critical component of a ship's water intake system, allowing seawater to flow into cooling, ballast, and other onboard systems. Over time, these grids can become clogged with marine debris, such as seaweed, barnacles, and other obstructions. If left unchecked, this buildup can disrupt water flow, compromise the efficiency of shipboard systems, and potentially lead to costly repairs or downtime.



Underwater Plugging and Unplugging of Overboard Pipe

Overboard pipes play a crucial role in a vessel's operational systems, including water intake and discharge. At JVS, we offer specialized underwater plugging and unplugging services for overboard pipes, ensuring that these systems remain functional and free from blockages.



Underwater Blanking of Sea Chest Grids, Speed Log, and Echo Sounder

JVS provides professional underwater blanking services for sea chest grids, speed logs, and echo sounders, ensuring safe and efficient maintenance. Our divers use high-quality blanking plates and sealing materials to create a watertight barrier, allowing work to be carried out without the need for dry-docking.





UNDERWATER INSPECTION AND SURVEYS

Underwater IWS CCTV Survey with Class and Without Class Attendance

In-Water Surveys (IWS) are an essential part of modern vessel maintenance, providing an alternative to dry-docking for assessing the condition of submerged components. These surveys save time and costs while offering shipowners valuable insights into the state of the hull, propellers, rudders, and other critical underwater structures. At JVS Diving and Marine Services, we specialize in conducting high-quality IWS CCTV surveys, both with and without class society attendance, tailored to the unique requirements of each client.



Underwater Hull Paint Survey as per Paint Manufacturer Requirement

The hull paint system plays a crucial role in protecting a vessel from marine growth and corrosion, ensuring smooth operation and reduced maintenance costs. JVS Diving and Marine Services offers specialized underwater hull paint surveys that comply with manufacturer requirements, helping shipowners maintain the integrity of their paint systems. Using advanced tools and underwater imaging systems, we document every aspect of the paint system, identifying areas that require touch-ups or complete reapplication.

Our comprehensive reports are aligned with the guidelines of leading paint manufacturers, ensuring that shipowners receive accurate recommendations for maintaining their hull coatings.





UNDERWATER INSPECTION AND SURVEYS

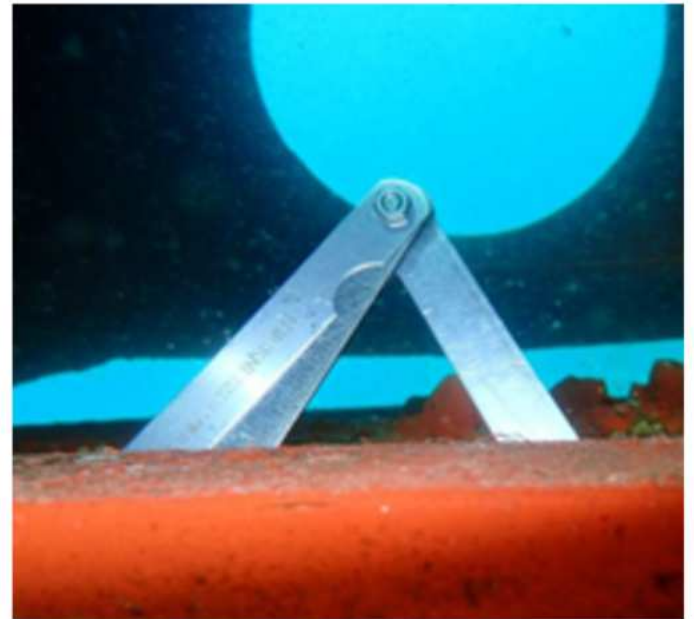
Underwater Propeller Shaft Reading Using Poker Gauge

The propeller shaft is a critical component of a ship's propulsion system, and its condition directly affects the vessel's performance and safety. Misalignment or excessive wear on the shaft can lead to vibration, increased fuel consumption, and mechanical failures. JVS Diving and Marine Services offers precise underwater propeller shaft readings using poker gauges to ensure the integrity of your propulsion system.



Underwater Rudder Pintle Clearance Measure

The rudder is one of the most critical components of a vessel's steering system, and its performance depends on maintaining proper pintle clearance. At JVS Diving and Marine Services, we provide precise underwater rudder pintle clearance measurement services to ensure the reliability of your vessel's steering system. Using advanced tools and techniques, our divers measure the clearance between the rudder and its pintles, identifying any deviations from recommended tolerances.



Underwater Still Photo Inspection

Visual documentation is a cornerstone of effective ship maintenance, providing detailed records of a vessel's condition for assessment and planning. JVS Diving and Marine Services offers high-resolution still photo inspections of underwater components, capturing critical details that aid in identifying wear, damage, or fouling.





UNDERWATER INSPECTION AND SURVEYS

Underwater Normal Video Inspection

JVS Diving and Marine Services offers a specialized underwater scrubber overboard pipe internal inspection service using advanced borescope cameras. This state-of-the-art inspection method enables a thorough evaluation of the internal condition of the discharge pipes without the need to dismantle the system. The borescope, equipped with a flexible probe and high-resolution imaging capability, allows our team to capture clear, detailed visuals of the pipe interiors, making it easier to detect corrosion, cracks, scaling, and other obstructions that may impede the scrubber's performance.

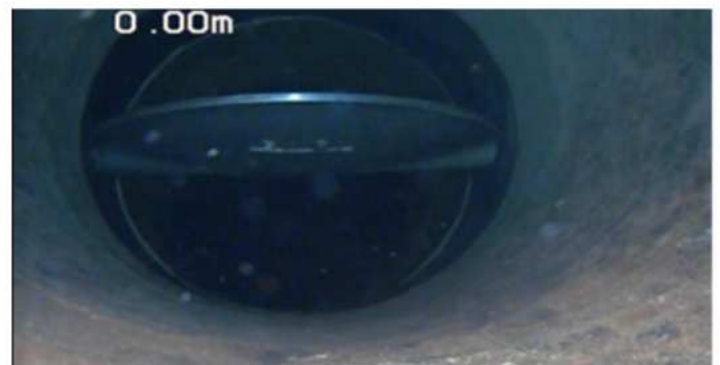
One of the key advantages of our borescope inspection service is that it is non-intrusive, meaning that the system can remain operational during the inspection. Traditional inspection methods often require disassembly or system shutdown, which can be costly and result in significant downtime for the vessel.



Underwater Scrubber Overboard Pipe Internal Inspection Using Borescope Camera

Scrubber systems play a crucial role in reducing emissions and ensuring compliance with environmental regulations, particularly in meeting IMO 2020 standards. However, the overboard pipes associated with these systems are prone to debris accumulation, scaling, and blockages over time.

These issues can impact the performance of the system, potentially leading to operational inefficiencies and regulatory non-compliance. With JVS's expertise, you can maintain your vessel's emission control systems efficiently, ensuring long-term operational success and environmental responsibility.

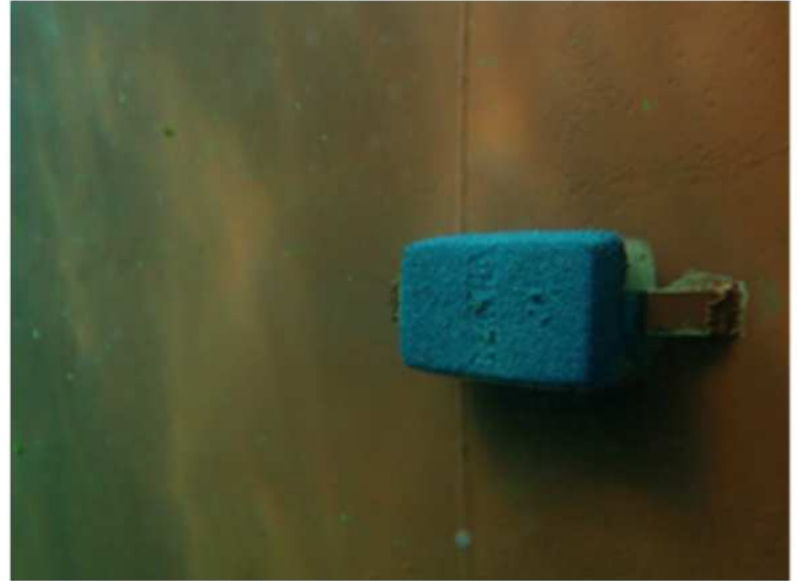




CORROSION CONTROL AND STRUCTURAL PROTECTION

Underwater Anode Fixing

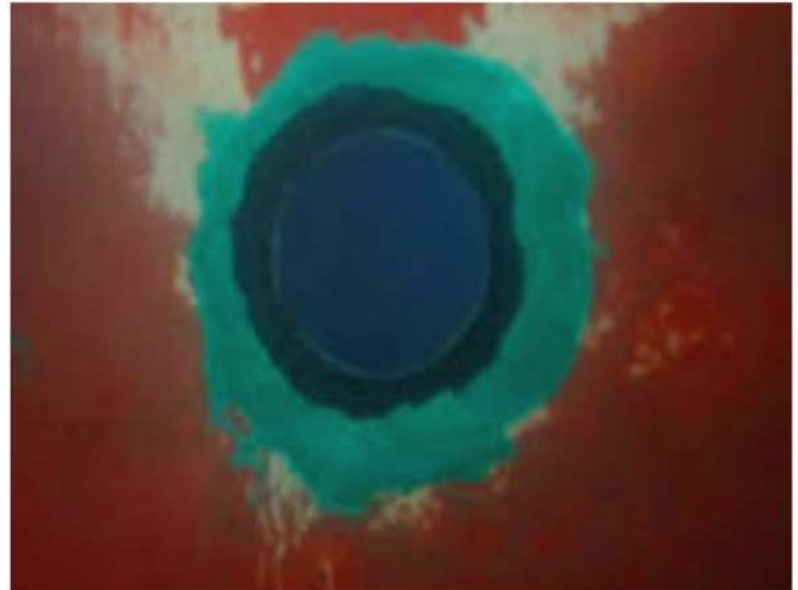
Anodes are a critical component of cathodic protection systems, safeguarding a vessel's hull and other submerged parts from corrosion. Over time, these anodes wear out and need to be replaced to ensure continuous protection. At JVS Diving and Marine Services, we provide professional underwater anode fixing services to maintain the structural integrity of your vessel. Our divers are skilled in the installation of sacrificial anodes, ensuring they are securely attached to the hull and other components.



Underwater Epoxy Putty Covering for Anodes

To enhance the durability and performance of sacrificial anodes, JVS Diving and Marine Services offers professional underwater epoxy putty covering services. This additional protective layer shields the anodes from mechanical damage, debris impact, and harsh environmental conditions, ensuring they remain effective over an extended period.

Our team of expert divers applies high-quality epoxy putty with precision, forming a seamless and durable coating that can withstand the challenging underwater environment.



Underwater Rope Guard Blanking for Repair

The rope guard protects the propeller shaft from damage and entanglement, but it may require repairs or replacement over time. By creating a watertight seal around the rope guard, our divers enable maintenance work to be carried out without compromising the vessel's operational readiness.



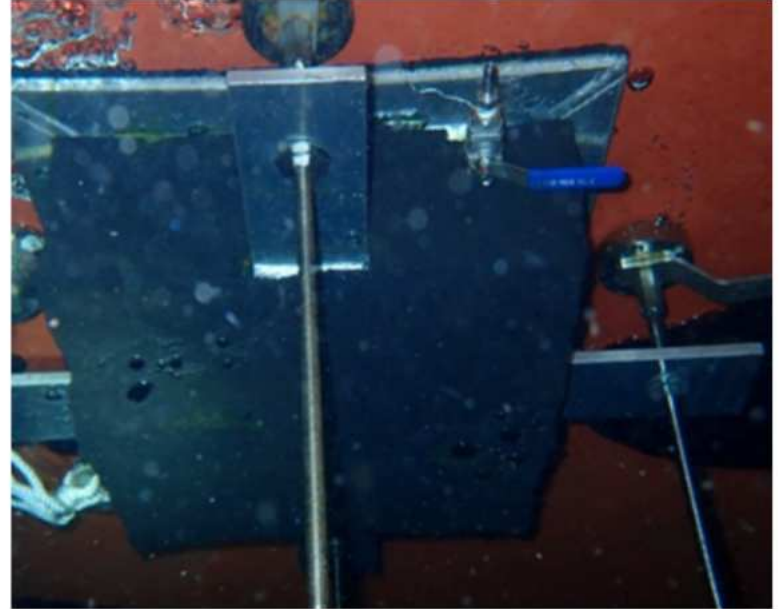


DIVING AND EMERGENCY SUPPORT SERVICES

Underwater Cofferdam Installation

Underwater cofferdam installation is a highly specialized service that allows for dry repairs and maintenance of submerged vessel components without the need for dry-docking. This innovative solution is particularly valuable for addressing issues such as leaks, hull damage, and component replacement while minimizing operational downtime.

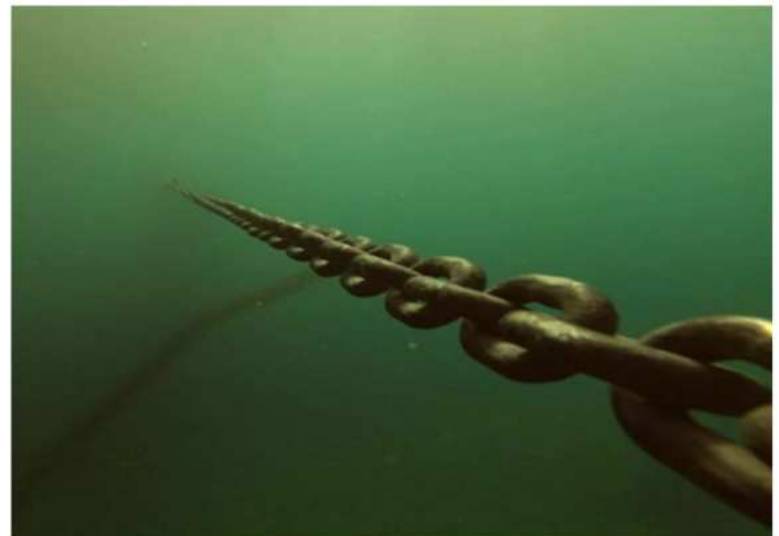
At JVS Diving and Marine Services, we are experts in the installation of temporary cofferdams to create a dry working environment underwater.



Underwater Diving Support for Anchor Handling Operations

Anchor handling operations are vital yet complex processes that involve deploying, retrieving, and repositioning anchors to ensure vessel stability during operations. These tasks require precise coordination and experienced professionals to avoid operational delays, equipment damage, or safety hazards. JVS Diving and Marine Services offers expert underwater diving support for anchor handling operations, ensuring safety, efficiency, and compliance with maritime standards.

Our team of highly trained and certified divers provides essential services, including anchor inspection, chain maintenance, and debris removal. During deployment or retrieval, anchor systems can accumulate marine growth or become entangled with debris such as fishing nets or cables. Our divers meticulously inspect the anchor and its chain to identify and resolve any issues, ensuring that the system remains fully functional.





DEBRIS AND FOULING REMOVAL SERVICES

Underwater Fishing Net/Rope Removal from Rope Guard and Propeller Shaft

Fishing nets, ropes, and marine debris pose a significant threat to the performance and safety of a vessel's propulsion system. These materials often become entangled around the propeller shaft and rope guard, leading to reduced thrust, increased fuel consumption, and even mechanical failure if not promptly addressed. Such entanglements can also cause excessive strain on the propeller, bearings, and related components, resulting in costly repairs and extended downtime.

JVS Diving and Marine Services offers professional underwater debris removal services to efficiently resolve these issues and restore the vessel's full functionality.



Above Water Level / Boot Top Cleaning Using High-Pressure Water Jet Machine

Maintaining the area above the waterline, commonly referred to as the boot top, is crucial for preserving a vessel's appearance and structural integrity. Continuous exposure to harsh marine conditions leads to the accumulation of salt deposits, dirt, and marine growth on the ship's exterior. Over time, this buildup can cause corrosion, weakening the vessel's structure and affecting its overall performance.

JVS Diving and Marine Services provides professional boot top and above-water cleaning using high-pressure water jet machines. This method is highly effective in removing stubborn contaminants without causing damage to the vessel's paintwork or surface.





OUR FACILITIES

Diving Boat

To meet the growing demand for diving services in the region, we have our own dedicated diving boat. This specialized vessel is designed to support a wide range of underwater operations, from routine maintenance to complex inspections and repairs. The diving boat is equipped with modern navigational tools, communication systems, and safety equipment, ensuring the smooth execution of every operation.



Warehouse

Our warehouse, strategically located in Fujairah, serves as the central hub for all equipment maintenance, storage, and logistics operations. By having a facility within the port, we can ensure rapid deployment of tools and equipment, streamlining our response time for urgent projects.

The warehouse is equipped with advanced machinery and tools that enable our in-house team to carry out regular maintenance and repairs on diving gear, underwater cleaning systems, and inspection equipment.



Diving Decompression Chamber

Safety is paramount in all diving operations, and our state-of-the-art Twin Lock Deck Decompression Chamber plays a crucial role in ensuring the well-being of our divers. This pressure vessel for human occupancy (PVHO) is housed within a 20-foot container, designed for maximum operational capability at depths of up to 100 meters sea water (MSW) or 10 bar of pressure.





GALLERY

Gallery Overview

Our gallery offers an in-depth visual representation of the critical underwater maintenance and inspection services provided by JVS Diving and Marine Services. It features key areas of a vessel, including the vertical port and starboard sides, flat bottom, bilge keel, bow thruster grid, and sea chest grid. These images capture our expertise in handling essential components prone to marine growth, debris accumulation, and structural wear.

From thorough cleaning and alignment of grids to flat bottom surface restoration, our work ensures improved hydrodynamic efficiency, vessel stability, and operational safety. The gallery reflects our commitment to delivering precise, high-quality marine solutions that meet industry standards.

VERTICAL AREA PORT SIDE PRE CLEAN



VERTICAL AREA PORT SIDE POST CLEAN



VERTICAL AREA STBD SIDE PRE CLEAN



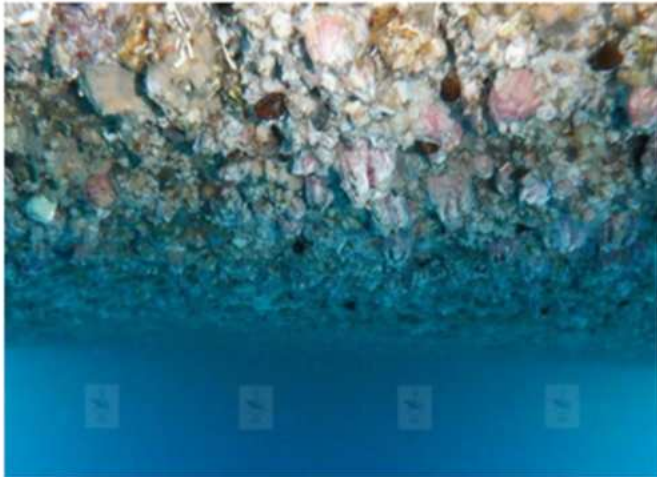
VERTICAL AREA STBD SIDE POST CLEAN





GALLERY

FLAT BOTTOM PRE CLEAN



FLAT BOTTOM POSTCLEAN



BILGE KEEL PORT SIDE PRE CLEAN



BILGE KEEL PORT SIDE POST CLEAN



BILGE KEEL STBD SIDE PRE CLEAN

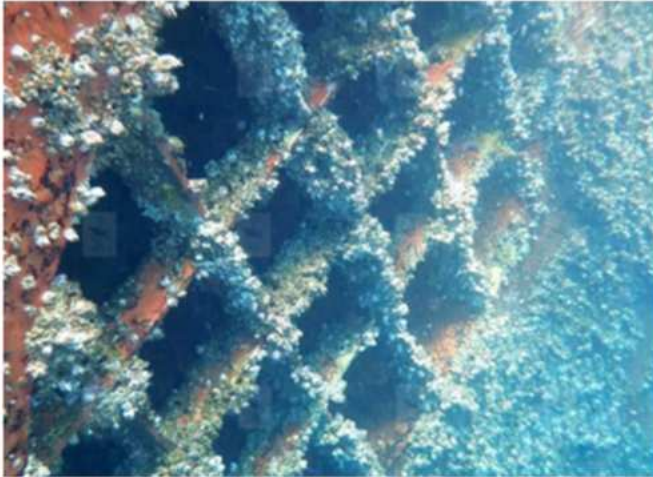


BILGE KEEL STBD SIDE POST CLEAN

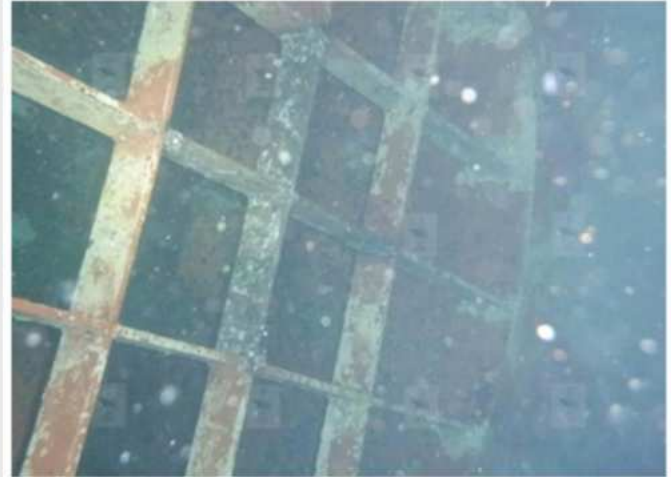


GALLERY

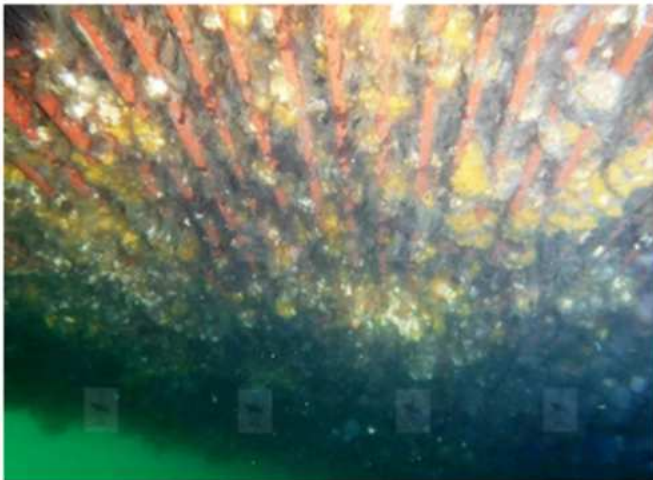
BOW THRUSTER GRID PRE CLEAN



BOW THRUSTER GRID POST CLEAN



SEA CHEST GRID PRE CLEAN



FIRE PUMP GRID POST CLEAN



STERN TUBE AREA PRE CLEAN



STERN TUBE AREA POST CLEAN



GALLERY

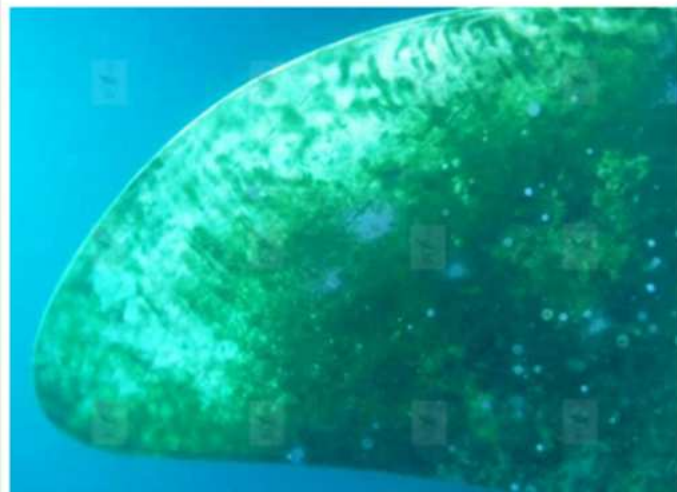
PROPELLER PRE CLEAN/POLISH



PROPELLER POLISHED



PROPELLER BLADE PRE CLEAN/POLISH



PROPELLER BLADE POLISHED



RUDDER PRE CLEAN



RUDDER POST CLEAN



GALLERY

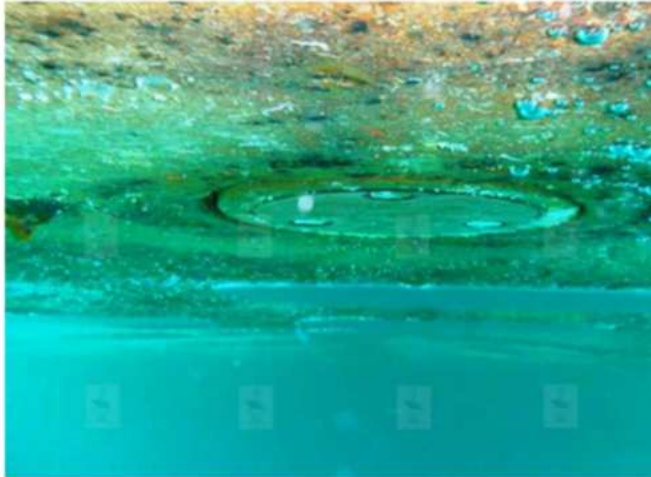
BEFORE OVERBOARD PIPE PLUGGING



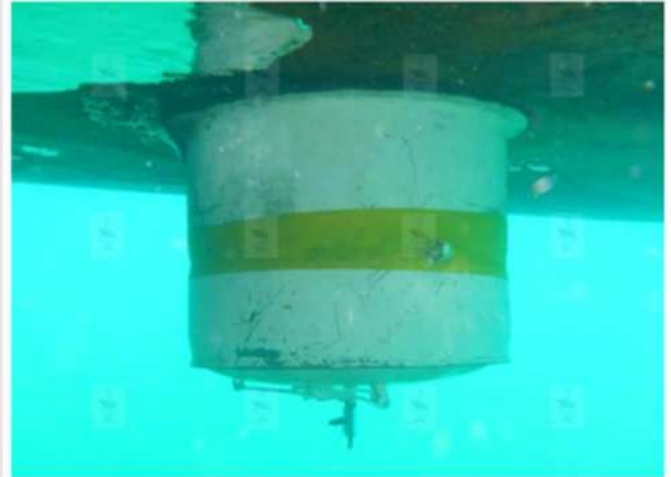
AFTER OVERBOARD PIPE PLUGGED



BEFORE ECHO SOUNDER BLANKING



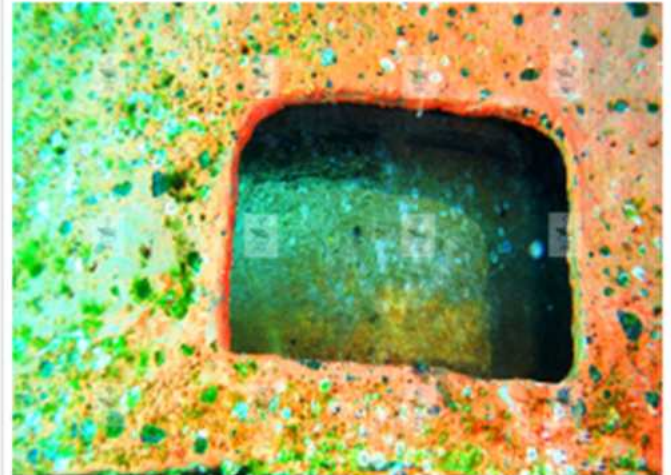
AFTER ECHO SOUNDER BLANKED WITH COFFERDAM



ROPE ENTANGLED INSIDE ROPE GUARD



ROPE GUARD AFTER ROPE REMOVAL





GALLERY

ROPE GUARD BEFORE BLANKING REPAIR



ROPE GUARD BLANKED FOR REPAIR



ABOVE WATER PRE CLEAN



ABOVE WATER DURING CLEANING



ABOVE WATER PRE CLEAN



ABOVE WATER DURING CLEANING



GALLERY

ABOVE WATER VETICAL SIDE PRE CLEAN



ABOVE WATER VETICAL SIDE POST CLEAN



ABOVE WATER VETICAL SIDE PRE CLEAN



ABOVE WATER VETICAL SIDE POST CLEAN



ABOVE WATER STERN AREA PRE CLEAN



ABOVE WATER STERN AREA POST CLEAN

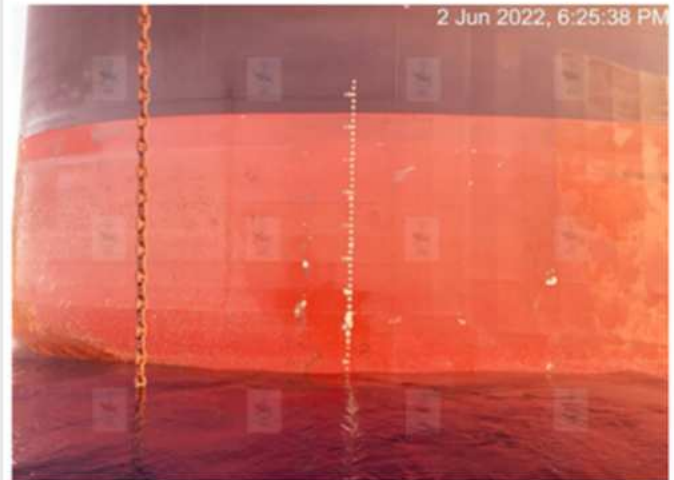


GALLERY

ABOVE WATER BOW AREA PRE CLEAN



ABOVE WATER BOW AREA POST CLEAN



ABOVE WATER BOW AREA PRE CLEAN



ABOVE WATER BOW AREA POST CLEAN



ABOVE WATER STERN AREA PRE CLEAN



ABOVE WATER STERN AREA POST CLEAN





SERVICE LOCATIONS

Service Locations

JVS Diving and Marine Services is strategically positioned to deliver efficient and comprehensive marine solutions across the UAE's most significant ports and maritime hubs. Our extensive service coverage allows us to respond promptly to client needs, ensuring reliable support for vessels, offshore platforms, and maritime operations.

PORT RASHID - DUBAI

Mina Rashid also referred to as Port Rashid, is a man-made port in Dubai, United Arab Emirates. It was Dubai's first commercial and it was opened in 1972.

Fujairah Port is the UAE's only multi-purpose port on the eastern seaboard, located approximately 70 nautical miles from the Straits of Hormuz. Since commencing full operations in 1983, it has become a critical junction for international trade routes, connecting East and West markets.

Khorfakkan Port in Sharjah is recognized globally as one of the leading container transshipment hubs. Established in 1978, its strategic position outside the sensitive Straits of Hormuz makes it an ideal gateway for vessels operating along routes to the upper Gulf, the Indian subcontinent, the Red Sea, and East Africa.

Khalid Port in Sharjah, established in 1976, is a vital multipurpose port with a dedicated container terminal. Located on the UAE's western coastline along the Arabian Gulf, it offers convenient access to shipping lanes connecting Europe, Asia, and the Americas.

Hamriyah Port, opened in 1995, is another crucial maritime hub integrated with Hamriyah Free Zone. This deep-water seaport provides direct access to the Arabian Gulf and benefits from its proximity to the Straits of Hormuz, offering an advantage for ships operating in the region.

By serving these strategic locations— **Dubai Port Rashid, Fujairah Port, Khorfakkan Port, Khalid Port, and Hamriyah Port**—**JVS Diving and Marine Services** plays an essential role in supporting the maritime sector.





JVS DIVING AND MARINE SERVICES

MMFS TOWER, SUITE: 701 B, AL MINA ROAD, OPP. SEA PORT - FUJAIRAH, U.A.E, PB NO: 50013

TEL: +971 9224 8801, +971 55 387 0596

EMAIL: info@jvsfujairahhullcleaning.com - WEB: www.jvsfujairahhullcleaning.com